

FIRST FLOOR



NAKAGAWA, OSAMU JAMES

- » JAPANESE-AMERICAN, BORN 1962
- » ISLAND
- » 2009
- » PHOTOGRAPH ON EPSON PAPER
- » GIFT BY PICTURA GALLERY, 2011



- » ROAD
- » 2009
- » PHOTOGRAPH ON EPSON PAPER
- » GIFT BY PICTURA GALLERY, 2011

Osamu James Nakagawa received a Master of Fine Arts from the University of Houston and now works as an

associate professor at the Henry Radford Hope School of Fine Arts at Indiana University Bloomington. Nakagawa's work is featured internationally in various public collections, including The Metropolitan Museum of Art, New York, NY; The International Museum of Photography at George Eastman House; and The Tokyo Metropolitan Museum of Photography, among others.

The Remains series is made up of forty-six images that are accompanied by a mix of Japanese as well as English text. The series of images depict the after-effects of the Battles of Okinawa and Saipan and how these effects still endure today.



PEREZ NOA, MADELIN

- » VIA CLARA, CUBA; BORN 1973
- » SI HICIERA FALTA, 2014
- » MIXED MEDIA
- » 2014

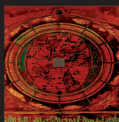
"This mural is a gift to our Sister City, Bloomington, Indiana, from the community of Santa Clara, Cuba. "Si Hiciera Falta" represents peace and friendship between all the people."



PISHGAHI, REZA

- » IRANIAN-AMERICAN, BORN 1954
- » ASSAL
- » 2012
- » STEEL AND CAST, CARVED GLASS, 2012
- » SPONSORED BY BLOOM MAGAZINE LOCAL ARTIST SHOWCASE 2012

Assal is a Farsi word that means honey which describes the color of the glass used in the pendant. This sculpture embodies the contrast between the transparent, fragility of glass and the opacity and strength of steel. It represents the opposites within nature. Despite their differences, these elements complement one another as both are needed to create beauty and balance.



POZZATTI, RUDY

- » AMERICAN, BORN 1925
- » COSMORAMA
- » 1976
- » COLOR LITHOGRAPH AND APEX MYLAR COLLAGE, 2011

Rudy Pozzatti is a well-respected printmaker whose work has been recognized all over the world. It has been featured in collections in France, Australia, and Canada as well as all over the United States. He received his MFA degree from the University of Colorado in 1950. He currently resides in Bloomington, Indiana.

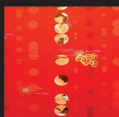
In Cosmorama, Pozzatti reused an image of an old map found on lithographic stone from an early American printing company. When the company downsized, Pozzatti rescued the stones for Indiana University's School of Fine Arts. For this specific piece, Pozzatti reworked the earlier image and added self-adhesive Mylar at its center.



REEVES, KENDALL

- » AMERICAN, BORN 1966
- » COURTHOUSE ATRIUM
- » PHOTOGRAPH
- » 2012
- » SPONSORED BY BLOOM MAGAZINE LOCAL ARTIST SHOWCASE 2013

A Bloomington native, Kendall Reeves picked up his first camera at the age of six, and has been photographing people and places ever since. His photos are featured in works that illustrate the beauty of South Central Indiana and the character of its people and places. The photograph of the Monroe County Courthouse is a pigment print with gloss laminate, mounted directly to brushed aluminum Dibond.



STIRRATT, BETSY

- » AMERICAN, BORN 1958
- » FLIGHT
- » 2002
- » OIL ON WOOD PANEL, 2011



- » SWELL
- » 2002
- » OIL ON WOOD PANEL, 2011

Betsy Stirratt received her Master of Fine Arts from Indiana University Bloomington. Her work has been featured in a number of exhibitions including the National Museum of

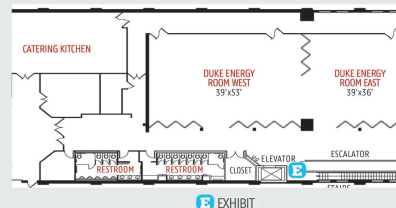
Women in the Arts in Washington, DC; The White Columns and art in general in New York, as well as galleries in Houston, Los Angeles and Mexico City. Stirratt has served as the Director of the School of Fine Arts Gallery at Indiana University since 1987. During her time as director of SOFA, she has curated numerous exhibitions in addition to producing various publications.

Stirratt uses a variety of methods when creating her one-of-a-kind works. She comments on the nature of her pieces, "The pictures are ultimately metaphysical but refer to the earth's topography while incorporating references to architecture and constructed spaces."

Special thanks to

Christine Mathew (Architect), Joan Snapp, Talisha Coppock, and April Wason for assistance in creating this collection.

SECOND FLOOR



YOUNG, FRANK NELSON III

- » AMERICAN, BORN GAINESVILLE, FL 1948
- » MOVED TO BLOOMINGTON, IN 1950
- » CURRENTS IN THE TREE OF LIFE
- » ALLEGORY OF LIFE IN SOUTHERN INDIANA
- » 42" W X 66" H X 3" D
- » INDIANA LIMESTONE
- » BFA IN SCULPTURE, INDIANA UNIVERSITY 1974
- » MFA UNIVERSITY OF OREGON 1976

Frank was Executive Director of the Bloomington Area Arts Council from 1990 to 2000. During his tenure the John Waldron Arts Center and the Indiana Theater (now the Buskirk-Chumley Theater) were acquired and restored. He has been carving limestone sculptures since 1970. He is featured in Katherine Ferrucci's Limestone Lives and Voices from the Indiana Stone Belt. He was the cofounder of the Indiana Limestone Symposium with Amy Brier. He continues to serve on the Board of Directors of the Indiana Limestone Symposium.



STIRRATT, BETSY

- » AMERICAN, BORN 1958
- » SEA
- » 2010
- » ACRYLIC ON PANEL
- » GIFT OF BLAISE CRONIN

"A love of nature and all things natural has crept slowly into my newest work. The recent paintings use color, line and space to refer to landscapes, vistas and horizons. The color palettes and placement refer to geographical formations and bodies of water and natural elements. Water and sand, earth, and grass are referenced. I'm interested in interspersing representational and abstract elements in a way that depicts a world that is familiar but illusory. The pictures are ultimately metaphysical but refer to the earth's topography while incorporating references to architecture and constructed spaces. My deep-rooted interest in order and regularity drives the construction of these paintings, which are windows into more complex worlds, integrating infinite ambiguous and realistic spaces."



PERMANENT art COLLECTION

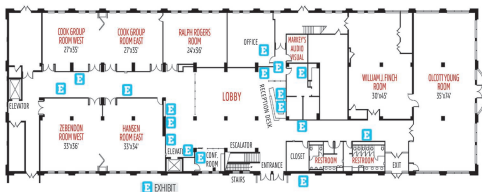
302 S. COLLEGE AVENUE | BLOOMINGTON, IN 47403 | 812-336-3681

MON-SAT 8AM-7PM, SUN 8AM-2PM, CLOSED ON HOLIDAYS

MonroeConvention.com

Monroe Convention Center is pleased to participate as an auxiliary gallery with the Downtown Bloomington Gallery Walk. Located in the Ralph Rogers Room of the center, this exciting new gallery space features the work of artists from Monroe County.

FIRST FLOOR



ARBOGAST, JAN

» SPONSORED BY BLOOM MAGAZINE LOCAL ARTIST SHOWCASE 2013

Jan Arbogast began her study of ceramics at Indiana University under the direction of eminent Indiana potter Karl Martz, a master of glazing techniques and glaze formulation. His instruction in the art and techniques of studio pottery is the foundation of her work today. While

at IU she also studied with visiting Professor Hiroshi Seto of Mashiko, Japan, from whom she learned a love of throwing on the wheel. Her own work pays homage to the timeless ceramic traditions of the Far East, North Africa, and ancient America while still being uniquely her own. Her attachment to the craft of pottery comes from the doing of it, from the harmonious and rhythmic nature of the process. Her intention is to create elegant forms and happy glazes. Her artistic home is wherever beautiful pottery can be found.

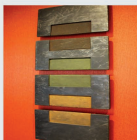


BUSEY, ELIZABETH

» AMERICAN, 1967
 » AN ECHO OF BEGINNINGS
 » REDUCTION LINOCUT WITH GOLD LEAF
 » 2015
 » SPONSORED BY BLOOM MAGAZINE LOCAL ARTIST SHOWCASE 2015

Elizabeth Busey is a Bloomington printmaker who works in her eastside home studio. She prints with an etching press her husband built out of recycled steel. They later expanded the press with funding from an Indiana Individual Artist grant. The imagery that inspires Elizabeth comes from her love of the natural sciences and her many travels abroad, across the continent, and especially right in her own backyard.

"Each print is created using one linoleum block, where ink is rolled on the block and then printed on cotton rag paper. I begin with a very minimal outline of the subject, allowing the image to develop in the conversation between carving away the block and printing each stage with transparent and opaque layers of color. As the print develops, more linoleum is carved away—or reduced. This process allows me to create a rich two-dimensional exploration of the three-dimensional world."



DEVITT, NELL

» AMERICAN, BORN 1949
 » INTERLOCK
 » 2011
 » CERAMIC TILE, 2011

Nell Devitt specializes in smoke fired, clay tile wall installations. Devitt completed a one year apprenticeship with Ono Yoshi in Japan in 1976. From there she established her studio in Bloomfield, Indiana and began creating a collection of practical stoneware pottery. Her works have been featured in numerous exhibitions all over the country including New York, New Jersey, Texas, Kentucky and Massachusetts, among others.

"Interlock is based on a simple idea. Four rectangles connected by three squares. The shape connects. The concept connects."

FINGER, MICHAEL

» AMERICAN, BORN 1952
 » GIFT BY PICTURA GALLERY, 2013
 » WOOLLY MILL PANO 1
 » 2013
 » DIGITAL CAPTURE, ARCHIVAL INKJET PRINT ON PAPER



» WOOLLY MILL PANO 3
 » 2013
 » DIGITAL CAPTURE, ARCHIVAL INKJET PRINT ON PAPER
 » SPONSORED BY BLOOM MAGAZINE LOCAL ARTIST SHOWCASE 2013



"I am drawn to the places where once there had been great activity and now, due to the vagaries of nature, culture and time, the activity has ceased or been transformed to an entirely new purpose. The abandoned industrial setting has the added appeal of objects that are large in scale, have textural qualities imbued by rust and grime and simple, utilitarian geometric form. The images created in this environment connect with the common memory of the audience.

I have been expressing my creative self through the medium of photography since the late 1970's. My training has been ad hoc. As I needed to learn new techniques I have found the classes to learn them through a variety of sources. I have worked in various capacities in the photographic industry since 1985."

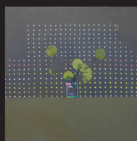


HAMBLY, MARY

» AMERICAN, BORN 1948
 » PAPER ART QUILT
 » 2012
 » SPONSORED BY BLOOM MAGAZINE LOCAL ARTIST SHOWCASE 2013

The Paper Art Quilt is a joining of contemporary art and traditional craft, a blending of individual elements in such a way that the joining allows for a richer and more meaningful whole. In the creative process stenciled, marbled, printed, and over-dyed papers are cut, pieced, and then stitched using a zig zag sewing machine. The resulting "quilt blocks" are then laid out in a composition, sometimes born out of the repeating pattern concept of traditional quilting, sometimes not. The "quilt" is then completed with a border, also of paper, and the result is a one of a kind image.

The rich and exotic papers which form the foundation of each Paper Art Quilt provide the opportunity to forge complex and unique combinations of design elements: dark & light, pattern & variation, harmony & discord, hard & soft, cool & warm, symmetry & asymmetry, flat & dimensional. Each element of color, texture and pattern retains its unique individual character yet is enlivened by the union of the whole. The result is a modern art form grounded in a rich textile tradition of process and design.

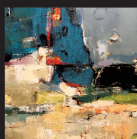


JORDAN, KELLY

» AMERICAN, 1974
 » RETURN: POSITION A (PHASE II)
 » ACRYLIC ON WOOD
 » 2014
 » SPONSORED BY BLOOM MAGAZINE LOCAL ARTIST SHOWCASE 2014

Kelly Jordan is an artist and instructor in Bloomington, IN. Originally from Ohio, she earned a BFA in 2006 from Wright State University. She went on to study painting at Indiana University where she earned an MFA in 2009. Kelly has taught painting, drawing and 2-D/Color Theory at IU, Herron School of Art and Design, and currently at Ivy Tech Community College.

"My recent paintings are an effort to bring the experience of perception, memory and projection together to share a stage, a united surface. In making the world flat, I imagine I can catch it and bring it close. If I'm lucky and the chase is good, the world becomes more, becomes new."



KANDER, TAMAR

» JERUSALEM, SOUTH AFRICA
 » AMERICAN, BORN 1958
 » QUARRY II
 » 2002
 » MIXED MEDIA ON CANVAS
 » GIFT BY BLAISE CRONIN, 2011

Tamar Kander was raised in Israel and South Africa. Kander has received degrees from both the University of Witwatersrand in South Africa as well as the University of London in England. Following her studies she moved to the United States, first living in New York and eventually moving to Bloomington, Indiana where she and her husband currently reside.

"When I moved to Bloomington from New York, I immediately fell in love with the magnificent stretches of large stone that make up the limestone quarries of this area; such a rich and diverse landscape of color, shape and texture. Different times of day cast light that sometimes lent a luminous glow, colors changed as seasons pass, and I was transfixed by these monumental worlds of stone. There followed a wonderful period of drawing and painting inspired by these various sites, and Quarry II is one of my dusk paintings from that period."



KANDER, TAMAR

» THINKING OUT LOUD
 » 2011
 » TRIPTYCH 40X80
 » MIXED MEDIA ON CANVAS

"Thinking out loud is the act of expressing in recoverable form new thoughts that may encourage and engender exploration. This is the process I used when creating the triptych. I began with some specific ideas about color and form and soon found myself embarked upon a journey, one between painter and the painting; like a meandering conversation that can take many turns.

The arrangement of marks, choice and intensity of hue, as well as light and dark values have the ability, the power to convey feelings and ideas. As the painting takes form, so the content gradually emerges. This is a painting about random thoughts and their expression."



KATZ, AVI A.

» ISRAELI, BORN 1970
 » CAT AND DOG DAYTIME (BUSKIRK-CHUMLEY THEATER DAYTIME)
 » COMIC, ILLUSTRATION AND FINE ART
 » GICLÉE PRINT OF INK ON PAPER/COLORIZED ON COMPUTER 2010
 » SPONSORED BY BLOOM MAGAZINE LOCAL ARTIST SHOWCASE 2013

"Making a connection between fine art and graphic novels, using cities, landscapes and architecture is my goal as an artist. I love electrical wires, streetlights, garbage cans and signs; all of which make our streets pulsate with life. I strive to unveil an enjoyable and different point of view to otherwise plain and familiar cityscapes."

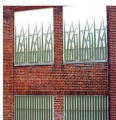


LINTON, JERRY

» AMERICAN, BORN 1951
 » KNIFE #3
 » 2004
 » ACRYLIC ON CANVAS, 2011

Jerry Linton began his artistry schooling in 1984 at the Skowhegan School of Painting and Sculpture. From there he received his Master of Fine Arts degree from Kansas State University. Linton's works have been featured in exhibitions internationally as well as all over the country including: New York, Kansas, Texas, Michigan, California and Indiana.

"I reuse [cut up and recycle] my previous work in the creation of new work and while that lets me be destructive, it also lets me have the pleasant feeling of being a fresh spectator of my own old work since each painting really carries a bit of the past with it."



MOORE, LARA

» BELLA BELLA
 » BLADES OF GRASS
 » 2009
 » B-LINE ENHANCEMENT GRANT
 » BLOOMINGTON ENTERTAINMENT ARTS DISTRICT
 » CITY OF BLOOMINGTON
 » DOWNTOWN BLOOMINGTON INC.
 » MONROE COUNTY CONVENTION AND VISITORS COMMISSION

Lara uses her own unique technique of gluing hundreds of hand cut tissue paper to a wooden form to create her own original designs. Each piece is finished with layers of a glossy resin that reacts with the paper and her special glue to give it a rich texture with the look and feel of glass. She attributes her aesthetic style as inspired by ancient Byzantine and Persian patterns, as well as French fabric and iron trellis work.